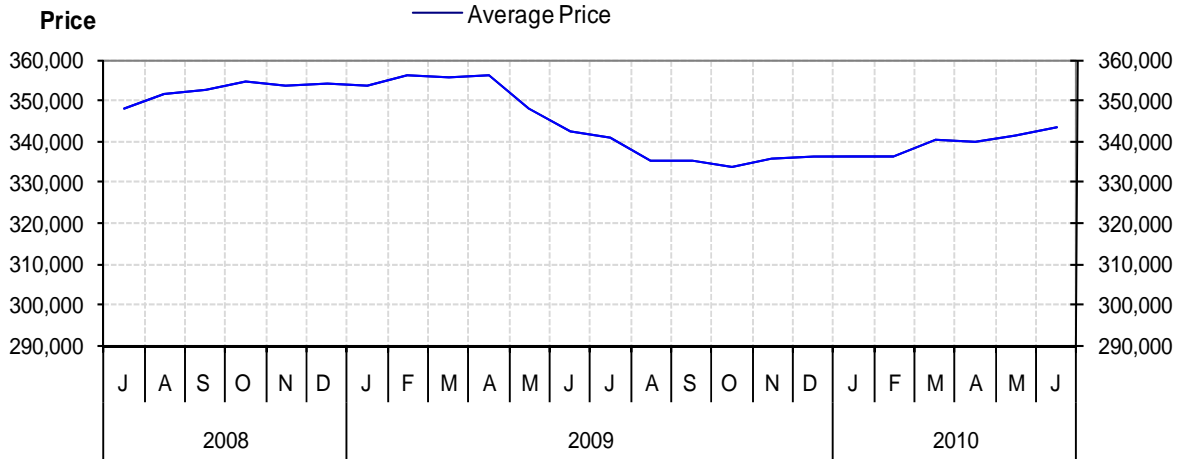


Comox Valley

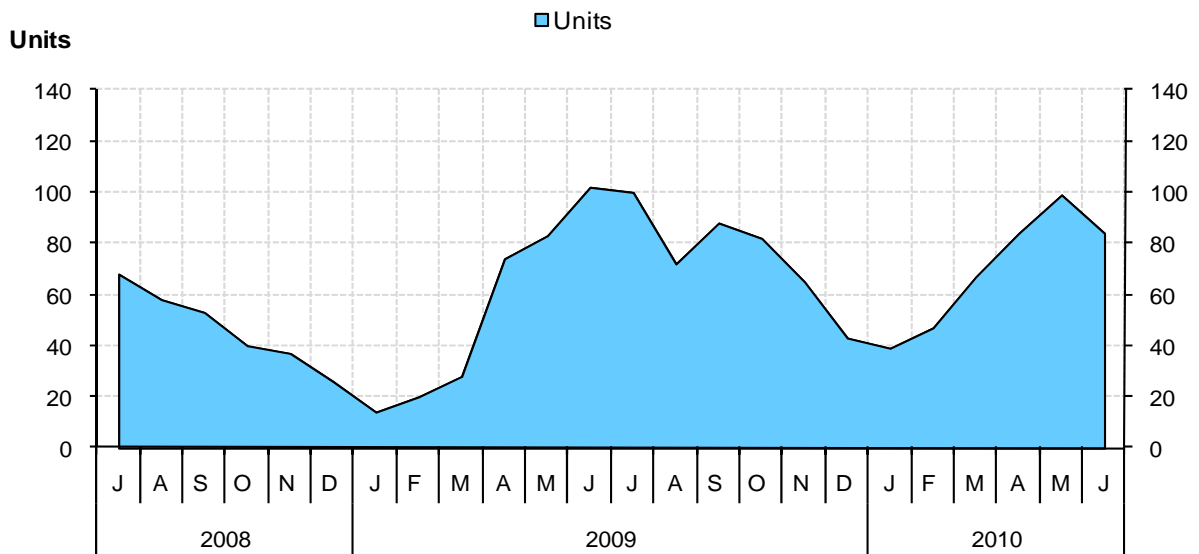
as at June 30, 2010

Cumulative Residential Average Single Family Sale Price



NOTE: Figures are based on a "rolling total" from the past 12 months – i.e. 12 months to date instead of the calendar "year to date".

Single Family Units Reported Sold



Comparative Activity by Property Type

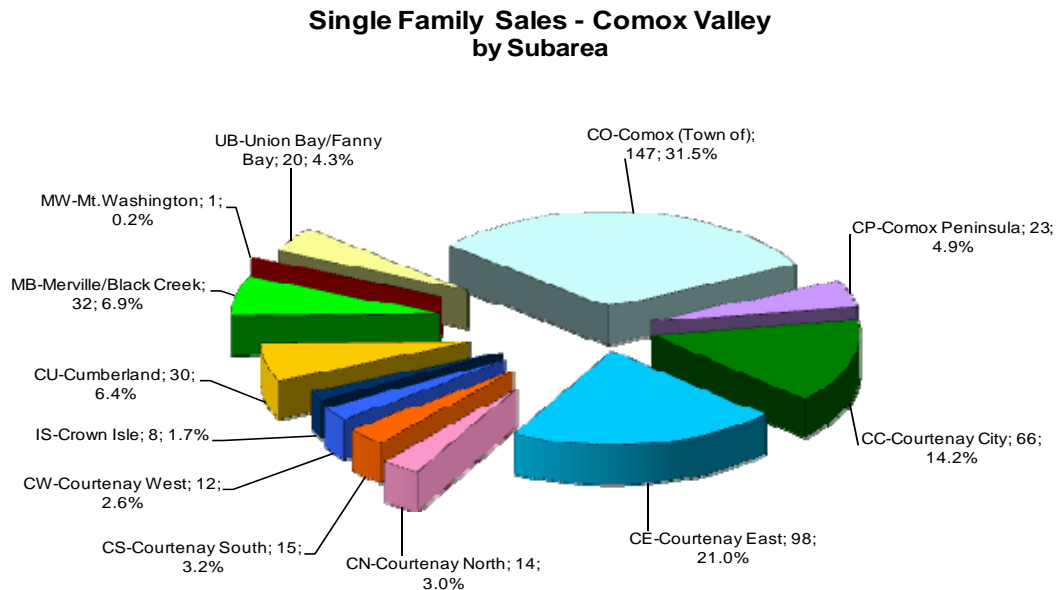
	Current Month			12 Months to Date		
	This Year	Last Year	% Change	This Year	Last Year	% Change
Lots						
Units Listed	9	13	-31%	193	291	-34%
Units Reported Sold	8	5	60%	169	48	252%
Sell/List Ratio	89%	38%		88%	16%	
Reported Sales Dollars	\$1,669,900	\$764,900	118%	\$23,872,495	\$6,786,300	252%
Average Sell Price / Unit	\$208,738	\$152,980	36%	\$141,257	\$141,381	0%
Median Sell Price	\$162,500			\$130,000		
Sell Price / List Price Ratio	95%	95%		95%	94%	
Days to Sell	96	89	7%	218	90	142%
Active Listings	90	210				
Single Family						
Units Listed	140	153	-8%	1450	1345	8%
Units Reported Sold	84	102	-18%	868	602	44%
Sell/List Ratio	60%	67%		60%	45%	
Reported Sales Dollars	\$30,426,650	\$34,683,703	-12%	\$298,321,870	\$206,170,503	45%
Average Sell Price / Unit	\$362,222	\$340,036	7%	\$343,689	\$342,476	0%
Median Sell Price	\$339,000			\$335,000		
Sell Price / List Price Ratio	95%	95%		95%	93%	
Days to Sell	76	84	-10%	77	83	-7%
Active Listings	540	506				
Condos (Apt)						
Units Listed	27	40	-32%	444	392	13%
Units Reported Sold	9	8	12%	122	84	45%
Sell/List Ratio	33%	20%		27%	21%	
Reported Sales Dollars	\$1,602,500	\$1,513,850	6%	\$24,125,121	\$17,932,816	35%
Average Sell Price / Unit	\$178,056	\$189,231	-6%	\$197,747	\$213,486	-7%
Median Sell Price	\$173,500			\$179,900		
Sell Price / List Price Ratio	93%	92%		93%	93%	
Days to Sell	103	86	20%	151	131	15%
Active Listings	250	217				
Condos (Patio)						
Units Listed	17	17	0%	149	137	9%
Units Reported Sold	11	13	-15%	114	64	78%
Sell/List Ratio	65%	76%		77%	47%	
Reported Sales Dollars	\$2,801,350	\$3,227,787	-13%	\$30,726,755	\$17,693,674	74%
Average Sell Price / Unit	\$254,668	\$248,291	3%	\$269,533	\$276,464	-3%
Median Sell Price	\$234,900			\$270,000		
Sell Price / List Price Ratio	98%	95%		96%	95%	
Days to Sell	109	161	-33%	107	119	-10%
Active Listings	48	69				
Condos (Twnhse)						
Units Listed	6	10	-40%	131	111	18%
Units Reported Sold	6	8	-25%	62	48	29%
Sell/List Ratio	100%	80%		47%	43%	
Reported Sales Dollars	\$1,230,800	\$1,549,000	-21%	\$13,060,386	\$9,816,258	33%
Average Sell Price / Unit	\$205,133	\$193,625	6%	\$210,651	\$204,505	3%
Median Sell Price	\$222,900			\$205,000		
Sell Price / List Price Ratio	95%	96%		94%	91%	
Days to Sell	95	38	148%	87	110	-21%
Active Listings	67	43				

PLEASE NOTE: SINGLE FAMILY property does NOT INCLUDE acreage with house, condominiums, duplex/triplex, mobile homes/on pad, single family waterfront or single family strata. **LOTS** do NOT INCLUDE acreage or waterfront acreage.

MLS® Single Family Sales Analysis

Unconditional Sales from January 1 to June 30, 2010

	0-150,000	150,001-200,000	200,001-250,000	250,001-300,000	300,001-350,000	350,001-400,000	400,001-450,000	450,001-500,000	500,001-600,000	600,001-700,000	700,001-800,000	800,001-900,000	900,001-1 Mil	OVER 1 Mil	Total
CO-Comox (Town of)	0	0	0	24	45	42	18	8	7	3	0	0	0	0	147
CP-Comox Peninsula	0	1	2	3	2	1	4	3	3	2	1	0	1	0	23
CC-Courtenay City	0	3	16	31	11	4	1	0	0	0	0	0	0	0	66
CE-Courtenay East	0	3	1	5	27	30	18	7	7	0	0	0	0	0	98
CN-Courtenay North	0	0	2	2	2	0	3	2	3	0	0	0	0	0	14
CS-Courtenay South	0	0	0	2	2	2	3	2	0	1	1	1	0	1	15
CW-Courtenay West	0	1	0	5	2	2	0	0	2	0	0	0	0	0	12
IS-Crown Isle	0	0	0	0	0	0	3	1	2	1	1	0	0	0	8
CU-Cumberland	1	3	5	6	9	4	2	0	0	0	0	0	0	0	30
MB-Merville/Black Creek	0	1	4	7	4	5	3	5	2	0	1	0	0	0	32
MW-Mt. Washington	0	0	0	0	0	0	1	0	0	0	0	0	0	0	1
UB-Union Bay/Fanny Bay	0	1	4	6	1	3	2	1	2	0	0	0	0	0	20
ZONE 2 TOTALS	1	13	34	91	105	93	58	29	28	7	4	1	1	1	466

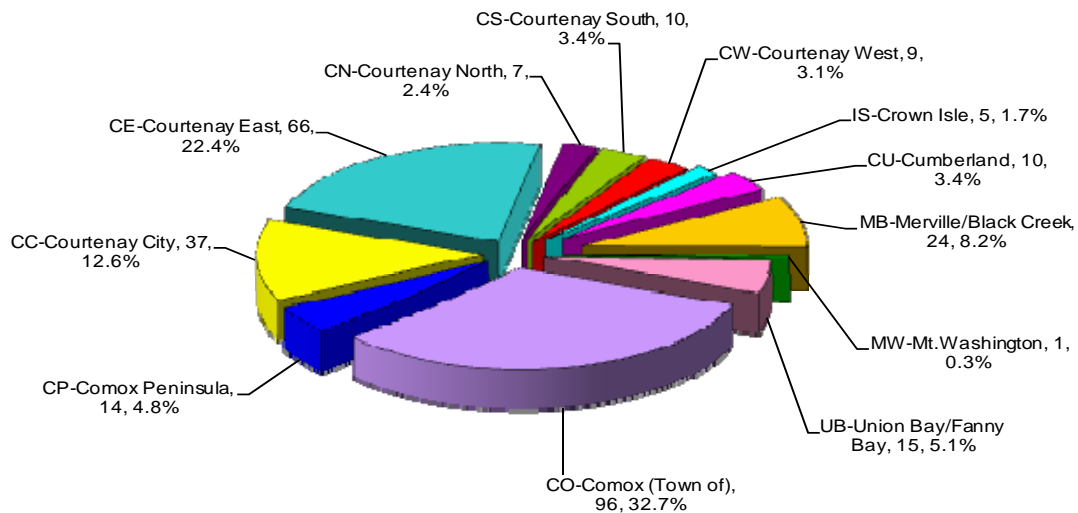


Total Unconditional Sales from January 1 to June 30, 2010 = 466

2nd Quarter 2010 MLS® Single Family Sales Analysis Unconditional Sales from April 1 to June 30, 2010

	0-150,000	150,001-200,000	200,001-250,000	250,001-300,000	300,001-350,000	350,001-400,000	400,001-450,000	450,001-500,000	500,001-600,000	600,001-700,000	700,001-800,000	800,001-900,000	900,001-1 Mil	OVER 1 Mil	Total
CO-Comox (Town of)	0	0	0	15	31	30	9	4	5	2	0	0	0	0	96
CP-Comox Peninsula	0	1	1	3	1	0	3	3	1	1	0	0	0	0	14
CC-Courtenay City	0	0	12	17	5	2	1	0	0	0	0	0	0	0	37
CE-Courtenay East	0	2	1	3	22	16	13	4	5	0	0	0	0	0	66
CN-Courtenay North	0	0	1	1	1	0	1	1	2	0	0	0	0	0	7
CS-Courtenay South	0	0	0	1	2	0	3	1	0	0	1	1	0	1	10
CW-Courtenay West	0	1	0	2	2	2	0	0	2	0	0	0	0	0	9
IS-Crown Isle	0	0	0	0	0	0	3	1	1	0	0	0	0	0	5
CU-Cumberland	0	2	0	3	2	1	2	0	0	0	0	0	0	0	10
MB-Merville/Black Creek	0	1	2	7	4	3	2	3	1	0	1	0	0	0	24
MW-Mt. Washington	0	0	0	0	0	0	1	0	0	0	0	0	0	0	1
UB-Union Bay/Fanny Bay	0	1	2	5	1	1	2	1	2	0	0	0	0	0	15
ZONE 2 TOTALS	0	8	19	57	71	55	40	18	19	3	2	1	0	1	294

2nd Quarter 2010 Single Family Sales Comox Valley by Subarea



Total Unconditional Sales from April 1 to June 30, 2010 = 294